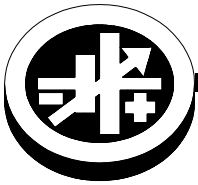


INSTRUCTION SHEET



KEPCO An ISO 9001 Company.

Series EL

SERIES EL USB DRIVER

I — INTRODUCTION

This manual covers the installation and USB driver for the Kepco Series EL Electronic Loads available at www.kepcopower.com/support/drivers/drivers-dl3.htm#el

II — DRIVER INSTALLATION.

Follow the steps below to install the EL Load USB Drivers downloaded from the Kepco website. First download the EL Load USB driver file `kepco_usb_serial_port_drivers.zip` from

www.kepcopower.com.com/drivers/

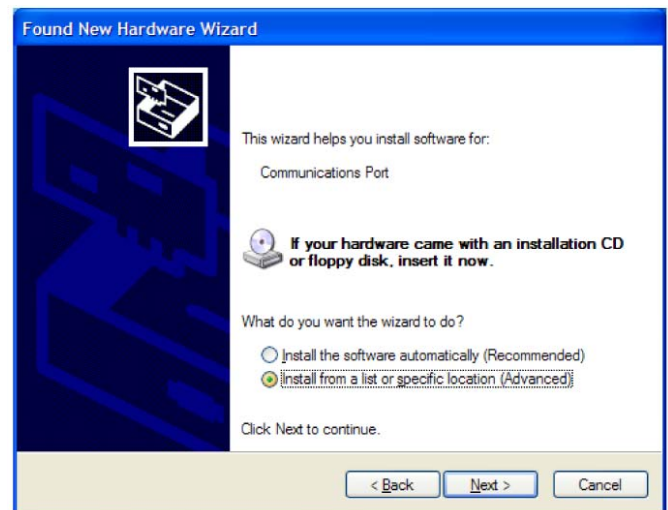
Note the location of this zip file in your computer.

1. Create a directory called Kepco USB Drivers at a known place on your computer (root directory or in My Documents, etc.).
2. Copy the two driver files (`mchpcdc.cat` and `kepcocdc.inf`) into the Kepco USB Drivers directory.
3. Apply power to the Series EL Electronic Load.
4. Connect the B end of a USB 2.0 cable into the B type USB port at the rear of the load.
5. Plug the A end of the cable into a USB port on your computer.
6. The computer responds with the Welcome to the Found New Hardware Wizard screen.

7. Select the No, Not this Time radio button and click on Next>.



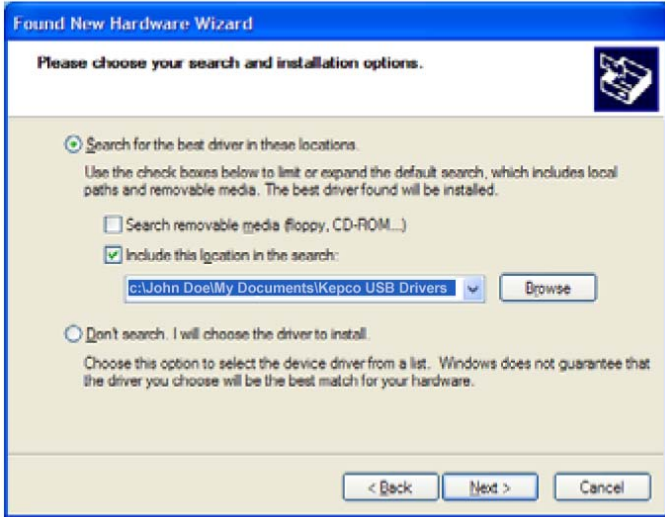
8. Select Install from a list or specific Location (Advanced) radio button and click on Next>



9. Click on the Search for the best driver in these locations radio button and check the box Include the location in the search.



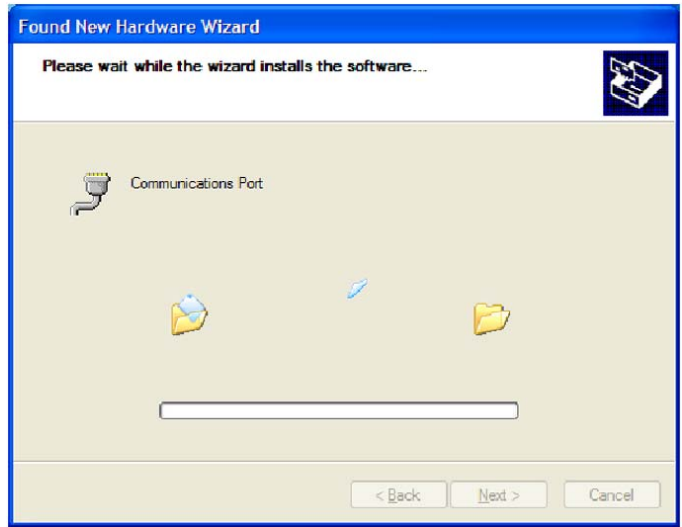
10. Click on the Browse button and find the previously created Kepco USB Drivers folder.
11. When the folder location is displayed below the check box (shown in blue in the screen shot below, click on Next>.



12. If the following dialogue box appears, click on Continue Anyway.



13. The following installation progress screen appears.



14. When the installation is complete, the following dialogue box appears. Click on Finish.

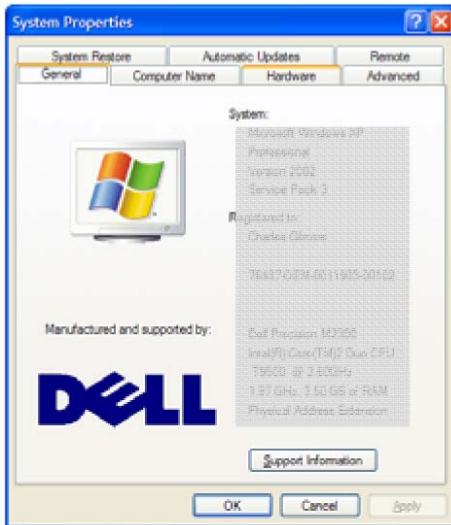


15. You have now installed the EL USB drivers.

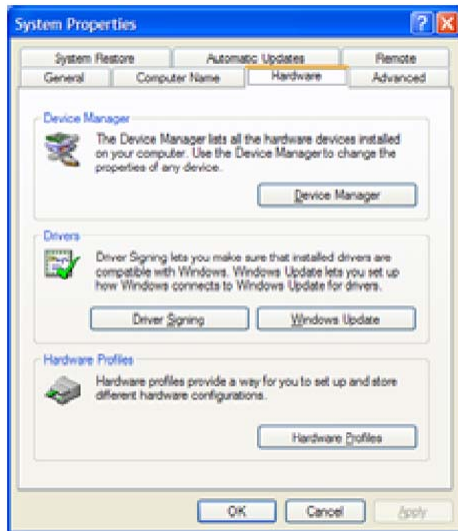
III — COMMUNICATION INTERFACE

To use a simple communications interface such as Hyper Terminal, you need to know which communications port (COM:XX) on your computer is being used by the USB connection.

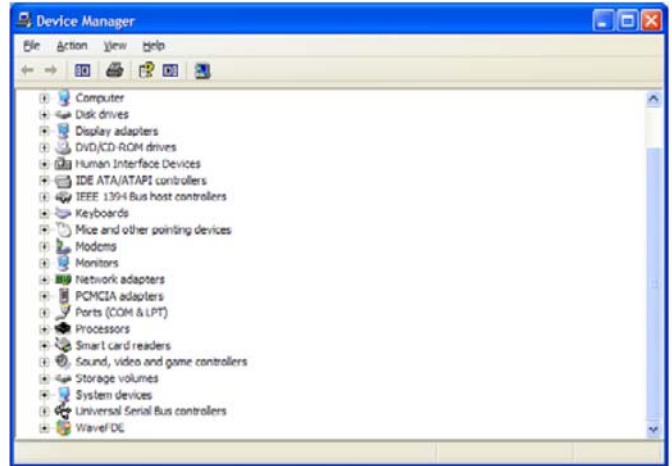
1. To determine this, click START, then click on CONTROL PANEL and then select SYSTEM from the list in the Control Panel screen.



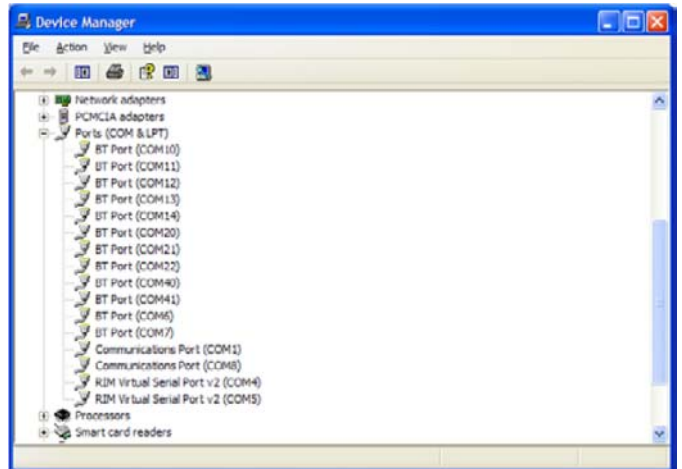
2. Select the Hardware tab.



3. Then click on Device Manager. This displays a list of hardware in your system.



4. Expand the Ports (COM & LPT) listing by clicking on the + symbol.

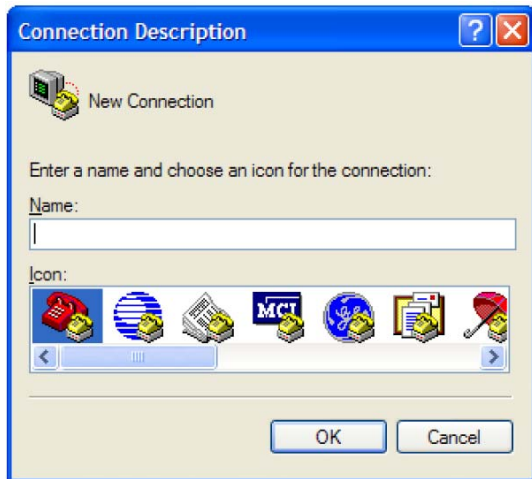


5. As you observe this list, unplug the USB Connector from your computer and observe which of the COM ports is removed from the list (it should reappear if you plug the USB Connector back into the computer). Note this COM port number for future reference.

6. Exit these programs with the USB cable plugged into your computer.

7. Launch Hyper Terminal by clicking on START, followed by All Programs, Accessories, Communications and finally HyperTerminal.

8. When Hyper Terminal is launched, assign a new connection name such as EL USB with the Connection Description dialogue box, then click OK.



9. When the Connect To dialogue box appears, select the COM port you discovered above from the pull down menu in Connect Using and click OK.

10. Click OK for the USB port properties—USB connections do not use these properties.

11. When you click on OK you will go to the HyperTerminal main screen, the telephone icon should be “off hook” and you are connected to the Series EL load.

12. Typing *IDN elicits a response from the Series EL load such as:

Kepeco Inc., EL-Series,12345.MCB #102 1.64 \$ 2009/02/06
15:35:41 \$ Compiled Feb 06 200910:37:12.

NOTE: It is important that you do not apply power to the EL load with HyperTerminal open because HyperTerminal tends to lock up if a USB connection is discovered after it is launched. The proper sequence is 1) power up the Series EL, 2) plug the USB connector into the computer (you will hear the familiar connection gong), then 3) launch HyperTerminal.