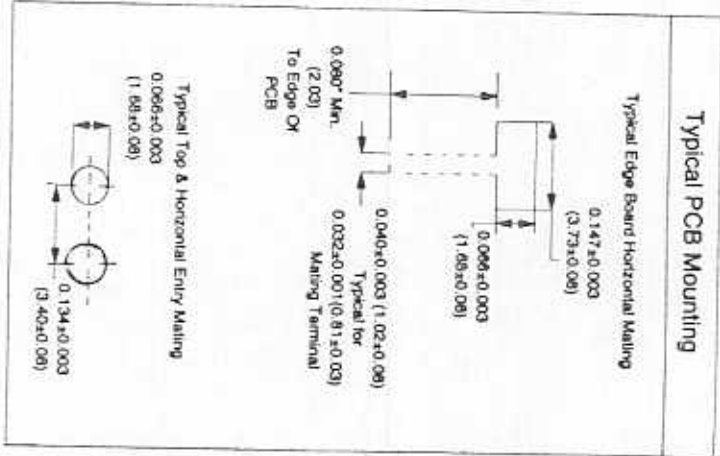
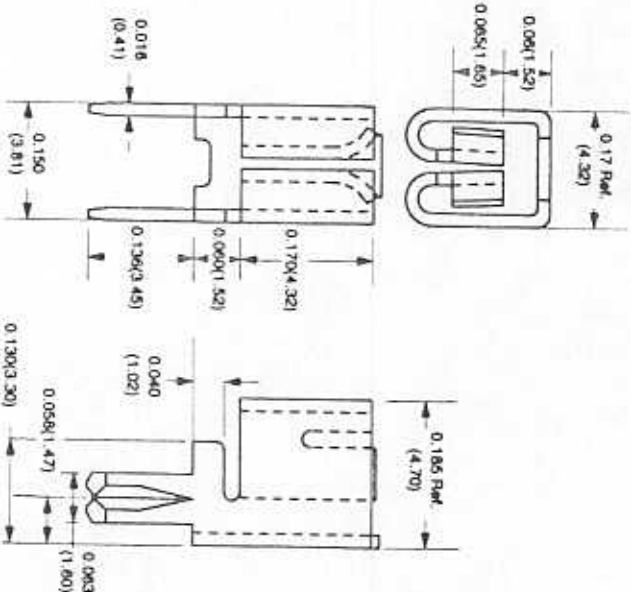


PART NO. 107-0300

DIMENSIONS : INCHES (MM)



Typical PCB Mounting

Typical Edge Board Horizontal Mating

Typical Top & Horizontal Entry Mating

REVISION		NO.	DESCRIPTION	BY DATE	CHKD DATE	APP'D BY

TOL:		SCALE:		SOURCES		MFG.	
DRAWN BY	CHKD BY	APP'D BY	APP'D BY	ORIGINATED FOR MODEL	ZIERICK	PART NO.	1092-6
BY	QA	ENGR	QA			PART NO.	

SIGN		DATE		HSP		TITLE:	
KUN	JES.	10/9/92	8/6/93	8/19/93	8/6/93	PCB SOLDER LUG	
DATE		PART NO.		PART NO.		REV.	
		107-0300		107-0300		REV.	



KEPCO PART NO.  
107-0300

INSP TEST  
PROCED. NOS.

OAP  
NOS.

MATERIAL: BRASS  
FINISH: TIN PLATED  
CURRENT RATING: 20AMPS  
RESISTANCE RATING: 5.0mΩ MAX.  
TEMP. RANGE: -65°C TO 85°C  
INSERION FORCE: 5.01b(22.24N) MAX.  
WITHDRAWAL FORCE: 3.01b(13.345N) MIN.

Markings: \_\_\_\_\_  
\_\_\_\_\_  
\_\_\_\_\_  
Remarks: \_\_\_\_\_  
\_\_\_\_\_  
\_\_\_\_\_

Approved Sources:  
A. ZIERICK \_\_\_\_\_  
\_\_\_\_\_

Approval Date \_\_\_\_\_

Mfg. P/N 1092-6  
Mfg. Catalog No. \_\_\_\_\_

Date of Catalog \_\_\_\_\_

B. \_\_\_\_\_  
\_\_\_\_\_

Approval Date \_\_\_\_\_

Mfg. P/N \_\_\_\_\_  
Mfg. Catalog No. \_\_\_\_\_

Date of Catalog \_\_\_\_\_

DRAWN BY: <u>WJN</u>	CHKD BY: <u>TS</u>	APPD BY: <u>L.H.</u>	Q.C. DATE: <u>8.6.93</u>	MODEL: <u>HSP</u>	SCALE:	TOLERANCE:	STOCK BOOK ENTRY DATE:	ACTIVITY:
TITLE: <u>PCB SOLDER LUG</u>								
PART SPECIFICATION								
ITEM: <u>PCB SOLDER LUG</u>								
TEST REPORT NO. _____								



FLUSHING  
NEW YORK  
KEPCO PART NO. 107-0300