

**Figure 1B: 25.4mm Component Pitch**

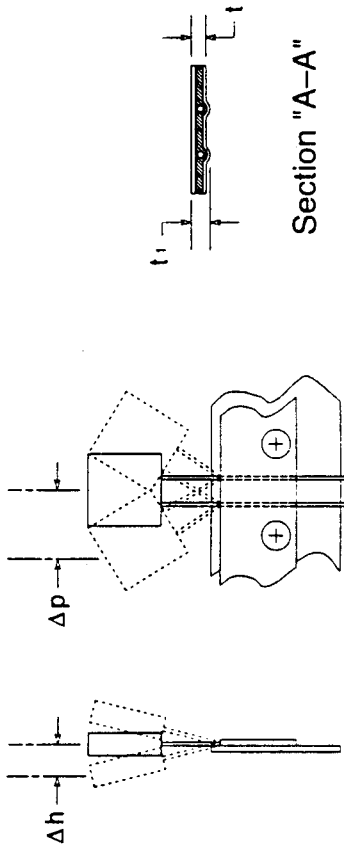
**TABLE 1B: Component Lead Location for 25.4mm Component Pitch**

<b>F: Lead Spacing</b> (See Fig. 2) [ e = 2.54mm ]	* P <sub>1</sub>
3e	3.81±0.7
4e	5.08±0.7
5e	6.35±0.7
6e	7.62±0.7

\*P<sub>1</sub> is the distance between the ordinate and the adjacent lead of the preceding component (in the direction of the unreeling). See Figures 1A and 2, and Requirement 3.5.

Example:

- Component Outline shown for reference only. There are other component configurations.
- $\Delta p$  and  $\Delta h$  are not to scale.
- $\Delta p$  and  $\Delta h$  can be measured to the right or left of vertical as shown



Section "A-A"

↑  
User Direction of Unreeling  
(See Figure 5)

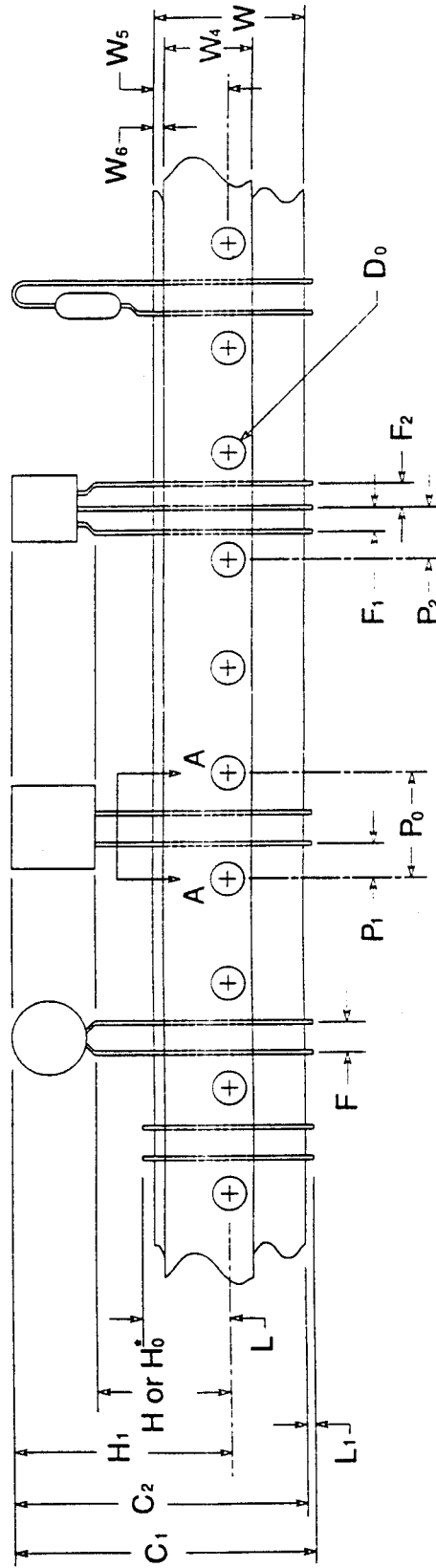


Figure 2: Two / Three Leaded Components

**Table 2: Lead Taping Dimensions**  
( See Figure 2 )

SYMBOL	DESCRIPTION	DIMENSIONS (mm)	REFERENCE
C <sub>1</sub>	Overall Width with Lead Protrusion	43.2 maximum	See Requirement 3.15
C <sub>2</sub>	Overall Width without Lead Protrusion	42.5 maximum	See Requirement 3.15
D <sub>0</sub>	Sprocket Hole Diameter	4.0±0.2	
F	2 Leaded Component Lead Spacing	Multiples of 2.54 +0.6, -0.2	See also Table 1A
F <sub>1</sub> ,F <sub>2</sub>	3 Leaded Component Lead Spacing	2.54 +0.4, -0.1	See Requirement 3.5
H	Height to Seating Plane (Straight Leads)	16-21	See Requirement 3.17
H <sub>0</sub>	Height to Seating Plane (Formed Leads)	16.0±0.5	See Requirement 3.16
H <sub>1</sub>	Overall Height Above Abscissa	32.2 maximum	
Δh	Front to Back Deviation	0±1.0 maximum	See Requirement 3.18
L	Cut Out Length	11 maximum	
L <sub>1</sub>	Lead Protrusion	1.0 maximum	
P <sub>1</sub>	Ordinate to Adjacent Component Lead	See Table 1A, Table 1B,	See Requirement 3.5, and Figures 1A and 1B
P <sub>2</sub>	Ordinate to Component Center Lead (3 Leaded)	6.35±0.7	See Requirement 3.5
P <sub>0</sub>	Sprocket Hole Pitch	12.7±0.3	See Requirement 3.6
Δp	Plane Deviation	0±1.3 maximum	See Requirement 3.18
t	Composite Tape Thickness	0.9 maximum	See Requirement 3.8
t <sub>1</sub>	Overall Tape and Lead Thickness	1.5 maximum	
W	Carrier Tape Width	18 +1, -0.5	See Requirements 3.7 & 3.9
W <sub>4</sub>	Hold Down Tape Width	5 minimum	See Requirements 3.7 & 3.9
W <sub>5</sub>	Sprocket Hole Position	9 +0.75, -0.5	
W <sub>6</sub>	Adhesive Tape Position	3 maximum	See Requirement 3.7